

Wake™ Pro 230

Stability, power and music
to tow like a pro.



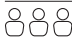
 Sand and Dazzling Blue

Rotax® 1630 ACE™ - 230

ST3® Hull

BRP Audio - Premium System

CAPACITY

Rider Capacity	
Weight Capacity	600 lb / 273 kg
Fuel Capacity	18.5 US gal / 70 L
Glove Box	0.8 US gal / 2.9 L
Front Bin	25.3 US gal / 96 L
Storage Capacity Total	26.1 US gal / 98.9 L

DIMENSIONS

Length (bumper to bumper)	135.8" / 345 cm
Width	49.4" / 125.5 cm (w/o rack)
Height	44.9" / 114 cm

HULL

Type	ST3 Hull
Material	Fiberglass

FEATURES

- Ergolock™ two-piece seat
- Seat strap
- RF D.E.S.S.™ key
- Wide-angle mirrors
- Handle grip with palm rest
- Footwell carpets
- Ski tow eye
- Tilt steering
- USB port

ROTAX ENGINE 1630 ACE - 230

Horsepower	230 hp
Intake System	Supercharged with external intercooler
Displacement	1,630 cc
Cooling	Closed-Loop Cooling System (CLCS)
Reverse System	Electronic iBR**
Fuel Type	87 octane
Throttle System	iTC™ (Intelligent Throttle Control)
Exhaust System	D-Sea-Bel™ system

GAUGE

Type of Gauge	10.25 in. touchscreen display
Main Functions	<ul style="list-style-type: none"> • BRP Connect • Music • Navigation • Bluetooth* connectivity • Speedometer • RPM • Clock • VTS™ • Fuel consumption • Fuel autonomy • Vehicle hours • Water temperature

iTC System - Mode	Eco*, Sport, Speed Regulator, Slow Speed Mode & Ski Mode
-------------------	--

WEIGHT

Dry Weight	836 lb / 379 kg
------------	-----------------

WARRANTY

BRP limited warranty covers the watercraft for one year.

*Electronic brake, neutral and reverse.

SEA-DOO®

What's New

- 10.25 in. touchscreen display

Key Features

- iBR - Intelligent Brake & Reverse
- iDF - Intelligent Debris-Free Pump System
- Watertight phone compartment
- Direct-access front storage
- Boarding ladder
- Large swim platform with LinQ® attachment system
- VTS (Variable Trim System)
- **Wake Package:**
 - LinQ retractable ski pylon
 - Speed-based ski mode
 - Removable wakeboard rack
 - Wake graphics



● Sand and Dazzling Blue

Feature Highlights



10.25 in. Touchscreen Display
 Bring your on-water experience to another level with this premium and elegant touchscreen display developed specifically for Sea-Doo riders. Enjoy enhanced connectivity and intuitive features including ride statistics, a compass, media control, marine navigation with the BRP GO! app and much more.¹



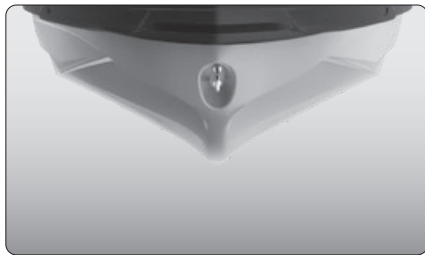
BRP Audio - Premium System
 A factory-installed, truly waterproof Bluetooth* audio system for an extra dose of fun and entertainment on the water.



Watersport Essentials
 Everything you need to practice watersports. A quick-install retractable ski pylon that stows away when not in use. Features spotter hand grips and rope storage. A wakeboard rack provides convenient storage and transport of a wakeboard.²



Rotax 1630 ACE - 230 Engine
 This powerful engine comes standard with a supercharger and external intercooler. It is optimized to run on regular fuel, which lowers fuel costs.



ST3 Hull
 An innovative hull that sets the benchmark for rough water handling, stability, and offshore performance.



Direct-Access Front Storage
 All your gear within arm's reach thanks to a 25.3 US gal (96 L) front storage area, easily accessible from a seated position. Simply raise the handlebars to access essentials for any adventure.

¹ GTX Limited shown. Visual may vary. ² Wakeboard and rope not included.

